

# TAC

## Very high electromagnetic immunity Tachometers

Faster Lab



Digital self-adaptive precision measurement chain

Embedded web-server

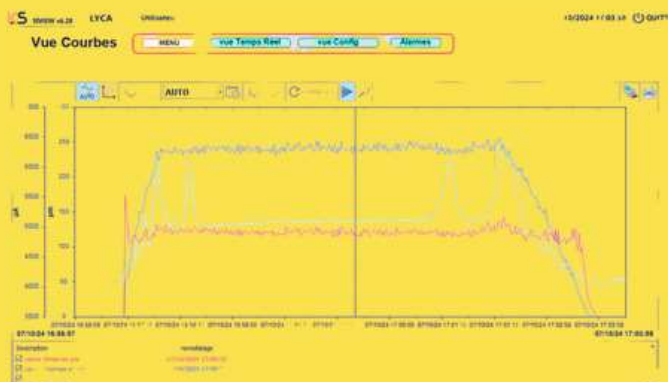
Rotating speed, direction and angle of rotation

Standard sensors

Standard and marine versions



requested  
specifications



Designed by



Application

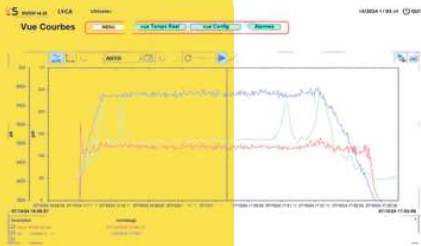
Wind power turbine

Hydro-electric turbines

Ship motors

Petrol and oil pumping systems

5G  
Demanding automatism



# TAC Features



Very high electromagnetic immunity (designed for use in substations and generating plants)

Reversal detection of the direction of rotation

Ultra slow speed measurement: from 1 top/min to 24000 tops/min

High angle measurement resolution (when with 2 sensors):  $< 0.1^\circ$  | Depending on teeth number

Reliability: Teeth recognition algorithm

Precision: 0.01% FS

Ability to reconstruct missing teeth and rejection of "false tops"

Safety: interviewable internal autocontrols and Watch Dog

Real-time quality indicators

Ease of use (configuration by web server)

Various outputs: 10 static relays, 4-20 mA loop, 0-10V, Ethernet, RS485, ModBus RTU

IP67 Marine version (NEMA 4,4X)

